

# Phish Alert Button (PAB): Your Protective Shield Against Phishing Attacks



The Phish Alert Button (PAB) is an important tool in the fight against cyberattacks. It helps you to report suspicious emails in your inbox as possible phishing attacks and thus contribute to the cybersecurity of your organization.

## Spam vs. Phishing: Recognize the Difference

Spam and phishing emails may appear similar at first glance, but they are fundamentally different in their intent and level of danger.



### Spam

- Unwanted advertising, mostly harmless
- Often uses exaggerated advertising language
- Intended to sell products or to attract visitors to a specific website



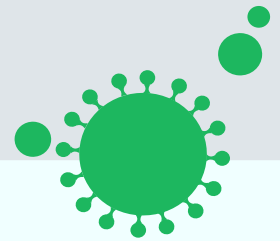
### Phishing

- Fraudulent messages with the aim of stealing sensitive data
- Uses an urgent or threatening tone
- Requests the disclosure of personal information



## Correct Use of the Phish Alert Button

The PAB is your most important tool for reporting suspicious e-mails. Its correct use contributes significantly to the IT security of your organization. **Only use the PAB to mark suspicious emails as phishing attempts if you suspect criminal intent. You can simply mark spam messages as spam and then forget about them.** You can simply mark spam messages as spam and then forget about them. However, if you receive a suspicious e-mail, select the PAB **without opening any links or attachments.** This report alerts your IT department so that they can investigate further.



## Safety Tips for Everyday Life



To protect yourself effectively against phishing attacks, it's important to follow a routine when checking your emails. Here's how you can stay safe at work:

- Carefully check the sender address, greeting, and content of every email for inconsistencies
- Be particularly careful with emails that urge you to act quickly
- Do not open any unexpected attachments or links
- If you are unsure, check with your IT department